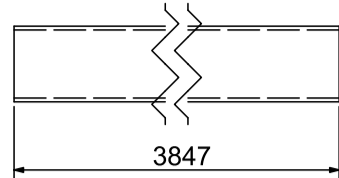
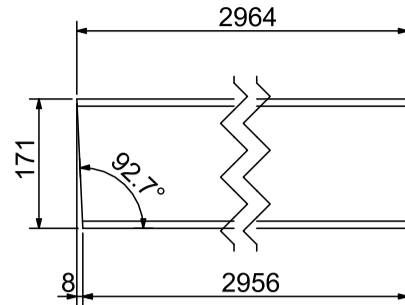


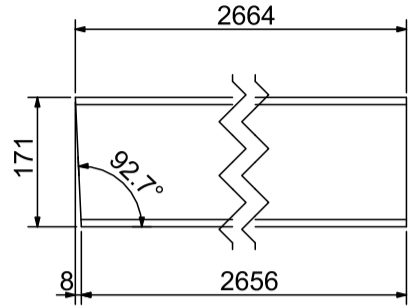
P2 RHS100x5-4 pcs./buc.
Scale / Scara 1:10



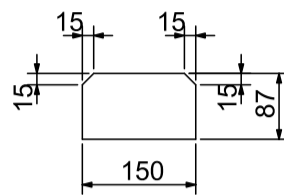
P4 HEA180-3 pcs./buc.
Scale / Scara 1:10



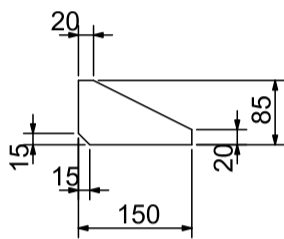
P5 HEA180-3 pcs./buc.
Scale / Scara 1:10



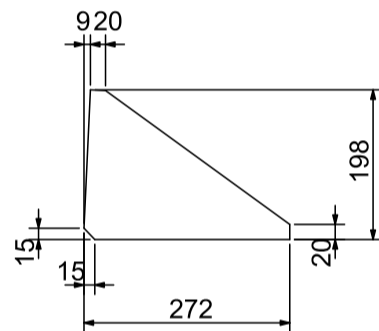
P6 PL 8x87x150-56 pcs./buc.
Scale / Scara 1:10



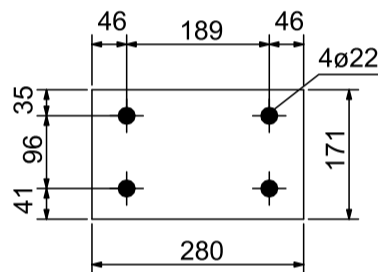
P8 PL 15x85x150-24 pcs./buc.
Scale / Scara 1:10



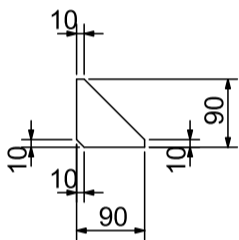
P12 PL 15x197.91x272.17-6 pcs./buc.
Scale / Scara 1:10



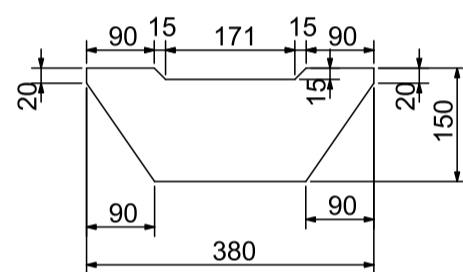
P9 PL 12x171x280-16 pcs./buc.
Scale / Scara 1:10



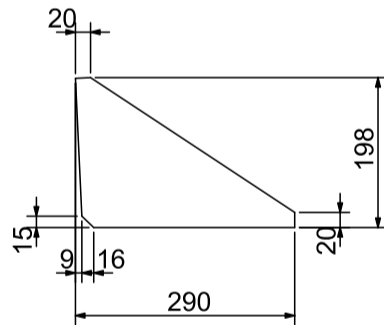
P10 PL 8x90x90-16 pcs./buc.
Scale / Scara 1:10



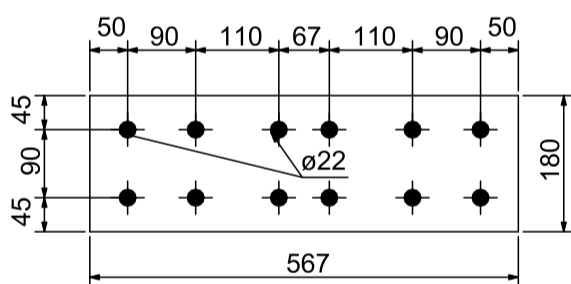
P11 PL 15x150x380-12 pcs./buc.
Scale / Scara 1:10



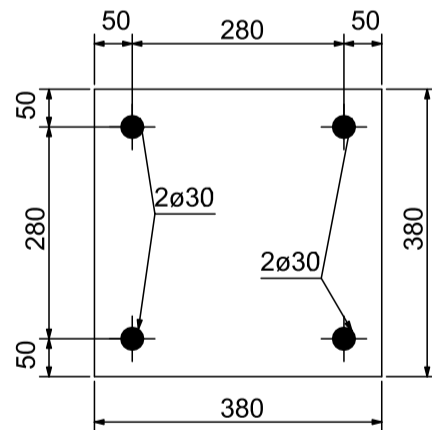
P13 PL 15x198.18x290-6 pcs./buc.
Scale / Scara 1:10



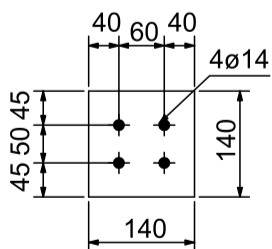
P14 PL 20x180x566.77-6 pcs./buc.
Scale / Scara 1:10



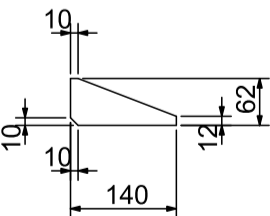
P15 PL 20x380x380-6 pcs./buc.
Scale / Scara 1:10



P140 PL 8x140x140-18 pcs./buc.
Scale / Scara 1:10



P141 PL 8x62x140-18 pcs./buc.
Scale / Scara 1:10



Extras de materiale							
Pos.	Name Nume	Material	Pcs.	Dimensions (mm)	Weight / Greutate		
					kg/pcs	kg/m	Total
P1	UPN140	S235 J2	6	9330	-	16,00	895,68
P2	Tv 100x5	S235 J2	4	3847	-	14,40	221,59
P3	HEA 180	S235 J2	3	7665	-	35,50	816,32
P4	HEA 180	S235 J2	3	2964	-	35,50	315,67
P5	HEA 180	S235 J2	3	2664	-	35,50	283,72
P6	Tabla	S235 J2	60	8 87 150	0,82	-	49,17
P8	Tabla	S235 J2	24	15 85 150	1,50	-	36,03
P9	Tabla	S235 J2	16	12 171 280	4,51	-	72,16
P10	Tabla	S235 J2	16	8 90 90	0,51	-	8,14
P11	Tabla	S235 J2	12	15 150 380	6,71	-	80,54
P12	Tabla	S235 J2	6	15 198 272	6,34	-	38,05
P13	Tabla	S235 J2	6	15 198 290	6,76	-	40,57
P14	Tabla	S235 J2	6	20 180 567	16,02	-	96,14
P15	Tabla	S235 J2	6	20 380 380	22,67	-	136,02
P140	Tabla	S235 J2	18	8 140 140	1,23	-	22,16
P141	Tabla	S235 J2	18	8 62 140	0,55	-	9,81
Total (kg) - including 3% weld / incluzand 3% sudura							3215

Nota :
1. Pentru note generale a se vedea prima pagina.

02	18.03.2022		Emis pentru utilizare
01	14.03.2022		Emis pentru utilizare
Revizie	Data	Modificare ceruta de	Descriere modificare

Verificator / Expert	Nume	Semnatura	Cerinta	Referat / Expertiza Nr. / Data
Proiectant general	ROENGG CONSULTING SRL RO 24611389 / 0344 806 979 / contact@roengg.com			Beneficiar : S.C. CONPET S.A.
Proiectant de specialitate				Titlul proiectului : INLOCUIRE GRUP DE POMPARE TITEI DEPOZIT SATCHINEZ JUDETUL TIMIS
Proiectat	Nume	Semnatura	SCARA : 1:50	Titlul plansei : PLAN STRUCTURA METALICA COPERTINA PENTRU GRUPUL DE POMPE
Verificat	State George		DATA : 18.03.2022	Plansa: 10202020-RNG-DM-12-003-02
Aprobat	Dobleaga Stefan			FAZA : P.T.+D.D.E.
				PAGINA: 3/3